

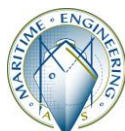
BRENNHOLM AS



MV BRENNHOLM LIWG - IMO 9268655

75,4m PURSE SEINER/TRAWLER

Yard:	Karmsund Maritime Service AS
Yard No.:	27
Delivered:	03-2007 (Hull built 2004)
Design:	Vik-Sandvik AS
Class:	DNV ✕1A1, Fishing Vessel
Flag:	Norwegian (NOR)
Trading area (Fishing vessel):	Deep sea fishing II
Trading area (Cargo vessel):	Small coastal trade (Norwegian waters)



Revised 09.01.2020

Main dimensions:

Length over all:	75,40 m
Length between P.P.:	66,40 m
Beam mld.	14,60 m
Depth moulded to 1 st deck:	9,00 m
Summer draught: (Fishing)	7,40 m
Summer draught: (Cargo international)	7,061 m
Summer draught: (Cargo national)	7,335 m
Gross tonnage:	2715GT

Capacities:

RSW tanks:	1980,0 m3
Diesel oil:	708,2 m3
Fresh water:	77,6 m3 + 60,0 m3
Water ballast: (Excl. RSW tanks)	249,7 m3
Deadweight, T=7,40 m: (Fishing)	2471 tonnes
Deadweight, T=7,061 m: (Cargo)	2283 tonnes
Deadweight, T= 7,335 m: (Cargo)	2548 tonnes
Service speed/Max. speed:	14/18,5 Knots

Fish finding:

- 1 off Low frequency sonar, Simrad SU 90.
- 1 off Medium frequency sonar Simrad SH 90.
- 1 off High frequency sonar, Furuno FSV 84
- 1 off Echo sounder Furuno FCV 1200 L with transducers 50F-24H and 200B-12H
- 1 off Trawl sonar, Simrad FS 70
- 1 off Seine sonar, Simrad SN 90
- 1 off Catch control system, Scanmar SRU-SB01
- 1 off catch monitoring system Simrad PI 44
- 1 off Current indicator, Furuno CI-68
- 1 off Split beam Echo sounder, Simrad type EK60, 18/38/120/200/333 kHz with GPT for each transducer
- 1 off Multi beam echo sounder, Simrad ME 70 with TD 50 3D software.
- 1 off ADCP (Acoustic Doppler Current Profiling) VmDas
- 1 off Pitch/roll stabilisator, Seatex MRU MRD-M-MB3

Retractable keel, reaching 2,4 m below bottom with following transducers:

- 1 off Split beam transducer, Simrad ES 18
 - 1 off Split beam transducer, Simrad ES 38 B
 - 1 off Multi beam transducer, Simrad ME 70 with
 - 1 off Split beam transducer, Simrad ES 120-7C
 - 1 off Split beam transducer, Simrad ES 200-7C
 - 1 off Split beam transducer, Simrad ES 333-7C
 - 1 off 75 khz ADCP, Ocean Surveyor
 - 1 off Sound velocity sensor, Valeport Mini SVS
- Underwater sound measurements carried out by IMR 08.12.2010.

Navigation and Communication:

- 1 off ARPA Radar 3 cm 96 NM, FAR 2117 BB.
 - 1 off Radar 10 cm 120 NM, FAR 2137S BB.
 - 2 off Chart plotter, TECDIS Telchart
 - 1 off Chart plotter, Olex 7.34+ HT
 - 2 off GPS, Furuno SC-50/Simrad GN33
 - 1 off Simrad AP 50 autopilot with thruster interface
 - 1 off Gyro, Simrad Gyro GC80 with repeater
 - 1 off AIS, Furuno FA-150
 - 1 off Anemometer, Vindsonic OMC 139
 - 1 off Night vision camera, Flir
 - 1 off DN 500 gate valve for temporarily HIPAP installation
- GMDSS for area A4 comprising the following equipment:
- 2 off Inmarsat C, Furuno Felcom 15.
 - 1 off MF/HF SSB, Furuno FS-1570
 - 1 off MF/HF SSB, Sailor 6310
 - 2 off VHF, Furuno FM-8800 S
 - 2 off Radiotelex terminals, Sailor/Furuno
 - 1 off Navtex receiver, Furuno NX-700 A/B
- 1 off VHF, Sailor RT 2048.
 - 1 off Satellite telephone/fax/data, Furuno Felcom 70 Fleet 77
 - 1 off Satellite telephone/fax/data, Ship Equip Sevsat
 - 1 off Broadband system, Ice.net
 - 2 off GSM cellphones
 - 1 off Iridium telephone Sailor SC 4000
 - Satellite antenna with tuner for TV (SeaTel/Canal Digital)

Deck machinery:

Cranes:

- 1 off Karm, WLL 3,0 T - 16,0 M
- 1 off Karm, WLL 3,0T-10 M/1,5 T - 6,7 M
- 1 off Karm, WLL 5,5 T - 10,3 M (Net crane aft)

Net drums:

- 1 off Karm Net drum, 82 T
- 1 off Bauer Net drum, 20 T

Winches:

- 2 off Karm Trawl/purse seining winches, 70 T
- 1 off Karm End wire winch, 23 T
- 1 off Karm Cork line winch, 6 T
- 1 off Karm Tail end winch, 23 T
- 1 off Karm Auxiliary winch, 9 T (To be fitted)
- 1 off Karm net winch (Tristar) 23T

Fish handling:

Fish pumping equipment:

- 1 off Karm fish pump 18"
- 1 off Water separator
- 1 off Vacuum pump

Scales:

- 1 off Pols P15/V-182 and 1 off Marell M2200

RSW plant:

2 off RSW plants, MMC kulde AS each 985 kW, located in separate compartment on 2nd deck SB. Remote operated valves on RSW system.

Wet laboratory:

Wet laboratory with water supply, ventilation, heating cabinet 0-195 °C, drying cabinet and sample freezers.

Accommodation:

The vessel is equipped with 1 off single cabins and 13 off double cabins all with separate WC/shower. Large mess/dayroom and separate smokers lounge. Conference room and lounge on wheelhouse top. Hospital on 1st deck inside accommodation area. Additional office and Pilot's cabin arranged below wheelhouse. Large galley with provision rooms etc. A wet laboratory space is arranged on 1st deck aft. Total number of berths is 29. Life saving appliances for a crew of 29. The complete accommodation is of a high standard.

A sewage treatment plant is fitted for handling of black water from accommodation.

Machinery:

Main engine:

- 1 off CAT 3616TA, 5060 kW(6870 hp) @ 900 RPM.

Reduction gear:

- 1 off Scana Volda ACG 950.

Shaft generator:

- 1 off AVK DSG 114 M1-8W 3130 kVA

Auxiliary engines:

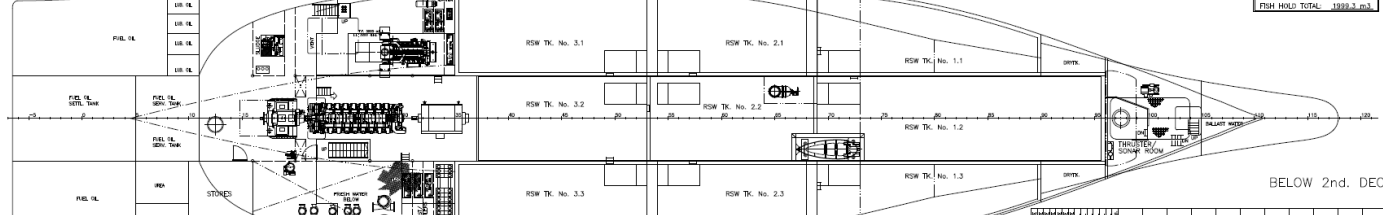
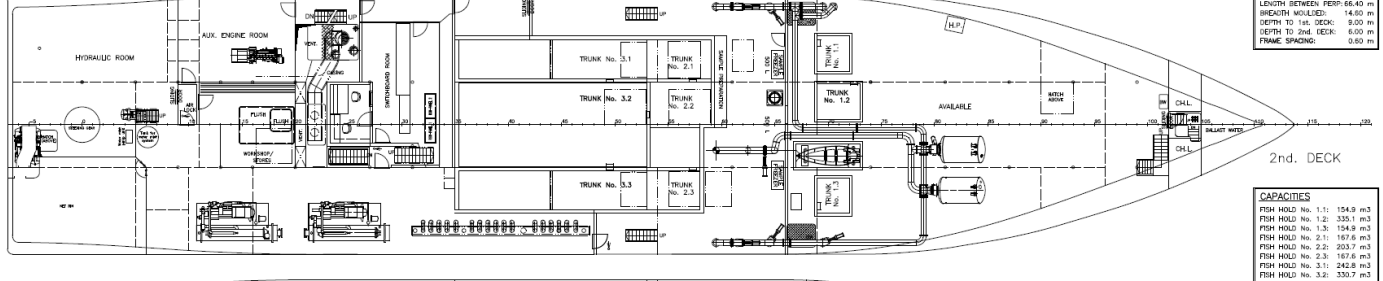
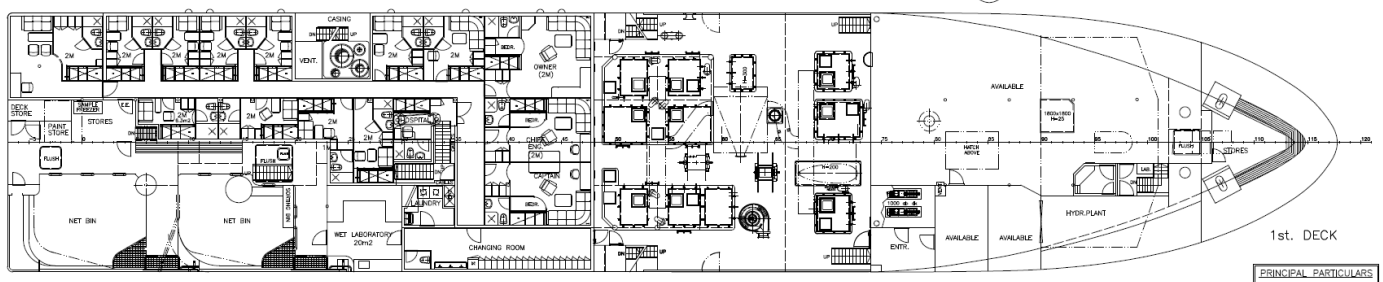
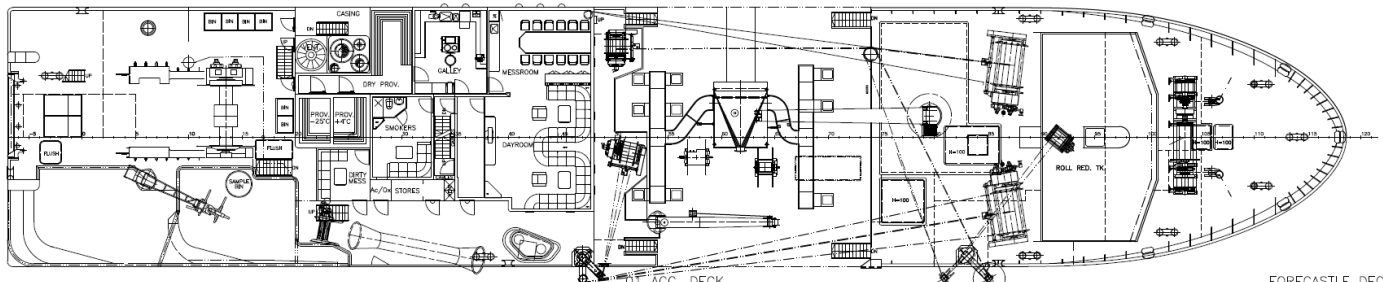
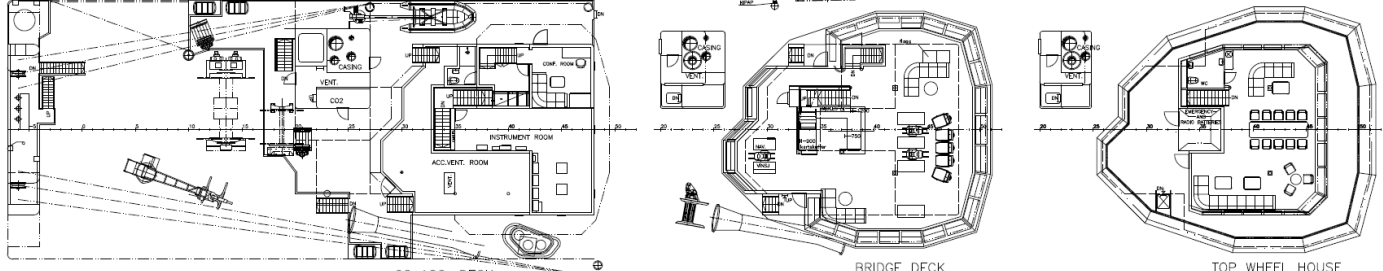
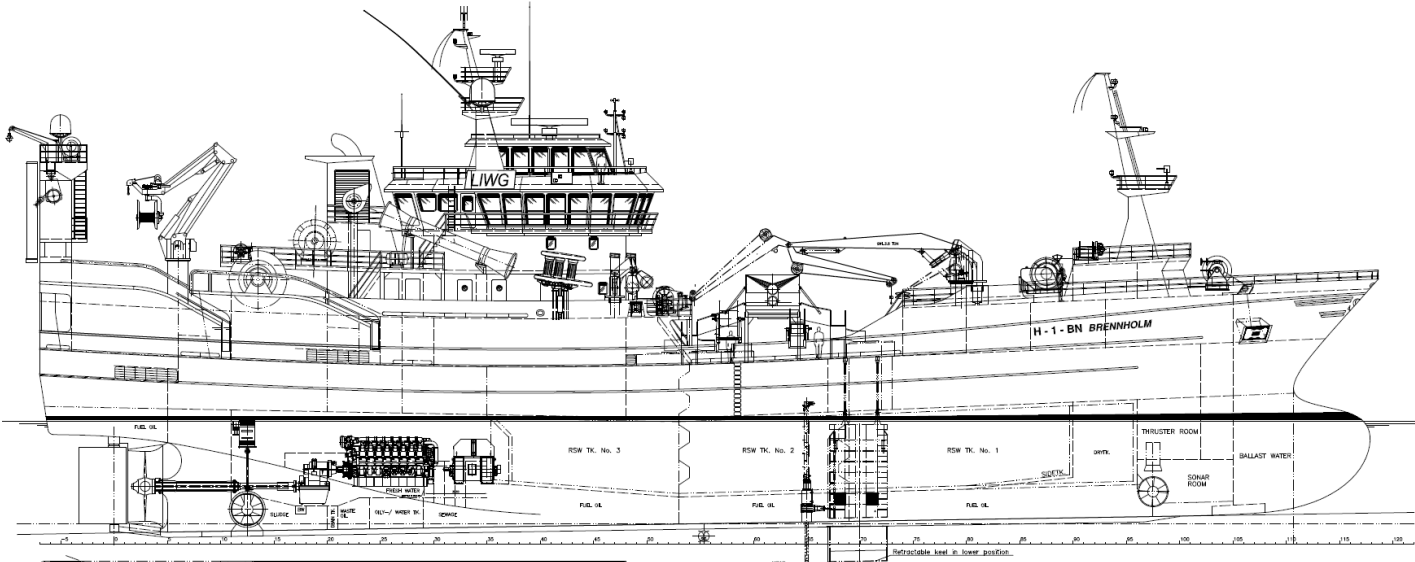
- 1 off CAT 3512 BTA, 1360 kW

- 1 off CAT 3406TA, 260 kW (Harbour gen)

Power supply:

- 3x450V 60Hz/3x230V 60Hz

- Side thrusters Brunvoll, forward 700 kW and aft 882 kW.



PRINCIPAL PARTICULARS

LENGTH OVER ALL:	75.40 m
LENGTH BETWEEN PERP:	66.40 m
BREADTH MOULDED:	14.60 m
DEPTH TO 1st. DECK:	2.00 m
DEPTH TO 2nd. DECK:	6.00 m
FRAME SPACING:	0.80 m

CAPACITIES

FISH HOLD No. 1.1:	154.9 m ³
FISH HOLD No. 1.2:	335.1 m ³
FISH HOLD No. 1.3:	154.9 m ³
FISH HOLD No. 2.1:	187.6 m ³
FISH HOLD No. 2.2:	203.7 m ³
FISH HOLD No. 2.3:	187.6 m ³
FISH HOLD No. 3.1:	242.8 m ³
FISH HOLD No. 3.2:	330.7 m ³
FISH HOLD No. 3.3:	241.9 m ³
FISH HOLD TOTAL:	1992.3 m ³

Kamrad Maritime	
1217122 M	
PAGE No. 27	
75.4m snurper/tråler	
GENERAL ARRANGEMENT	
W/ FRONT GENERATOR	
Scale:	1:100
Drawn:	1.01
Project No.:	3593
Rev.:	T
Drawn:	101-001
Rev.:	



Messroom



Dayroom



Galley



Cabin



Conference room



Engine room



Engine room



RSW room



RSW tank



RSW tank



Available space on 2nd deck



Inside forecabin



Deck equipment



Deck equipment



Deck equipment